

CHARTER

FURNITURE



HOLIDAY INN | H4 PUBLIC SPACE



HP-314.1.1A

ADDITIONAL INFORMATION

DIMENSIONS

SHOWN AS
POPLAR SCHEME

CHARTER ID
900-624B-61-LAF-HI-P
900-624B-96.5-RCL-HI-P

2 Piece sectional sofa with chaise to the right.
Upholstered inside / outside tight back, arms and seat deck.
Featuring loose reversible seat and back cushions.
Top stitched seams.
Exposed finished solid wood base and legs
(2) Power modules, each with 3-power outlets and 2-usb ports.
Includes (3) 18" W x 18" H knife edge throw pillows.

Width	100"
Depth	96.5"
Height	33"
Seat Height	19"
Arm Height	26"

COM Yardage	24
Pillow COM Yardage	3

CHARTER

FURNITURE



HOLIDAY INN | H4 PUBLIC SPACE



BEALE
 HP-314.1.1-B
 900-624B-61-LAF-HI-B
 900-624B-96.5-RCL-HI-B



P. KAUFMANN
 CLOUD GATE TAUPE
 WITH NANO CLEAN FINISH
 ACRYLIC BACKING

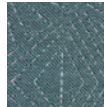


WOOD SPECIES: MAPLE
 SF-962-HI
 AIMTOO SAVATRE

HP-314.1.1P- B1, B2, B3 PILLOW



ANZEA
 MY WAY PICNIC 1079-07
 SUNBRELLA FINISH



DESIGNTEX
 STARBURST 3748-401DARK BLUE GREEN
 ACRYLIC BACKING



DESIGNTEX
 TESSELLATE PUMICE
 ACRYLIC BACKING

POPLAR
 HP-314.1.1-P
 900-624B-61-LAF-HI-P
 900-624B-96.5-RCL-HI-P



P. KAUFMANN
 MLSB HUNTING TWEED PEARL GREY
 WITH ACRYLIC BACKING



WOOD SPECIES: MAPLE
 SF-962-HI
 AIMTOO SAVATRE

HP-314.1.1P- P1, P2, P3 PILLOW



ARC COM
 BURKINA SUNFLOWER
 WITH STAIN RESISTANT FINISH



P. KAUFMANN
 UV ROUGH DIAMOND DENIM
 WITH NANOCLEAN FINISH



SWAVELLE
 CANAL LAKE
 WITH ACRYLIC BACKING