

# CHARTER

FURNITURE



HOLIDAY INN | H4 PUBLIC SPACE



HP-331.1.1

ADDITIONAL INFORMATION

DIMENSIONS

CHARTER ID  
 900-332B-71-NA-GR-HI  
 900-332B-65-RCUR-GB-HI  
 900-332B-65-LCUR-GB-HI  
 900-332B-65-NA-GB-HI  
 900-332B-60-NA-GL-HI

Market lounge 5 piece banquette.  
 Upholstered tight seat and back with deep horizontal channel tufting.  
 Featuring top stitch detail on all seams.  
 Exposed wood laminate base with (5) power modules.  
 Each power module with USB and Power outlets.  
 Adjustable nylon glides.  
 (6) 18" W x 18" H Throw pillows  
 Privacy wall and console table by others.  
 Field verification by others.

Width	190"
Depth	60"
Height	32"
Seat Height	17"

# CHARTER

FURNITURE

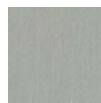


## BEALE

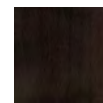
HP-331.11  
 900-332B-71-NA-GR-HI-B  
 900-332B-65-RCUR-GB-HI-B  
 900-332B-65-LCUR-GB-HI-B  
 900-332B-65-NA-GB-HI-B  
 900-332B-60-NA-GL-HI-B



BACK: VALLEY FORGE  
 SHARPLY IS42-26  
 BOTANICA  
 WITH INCASE STAIN  
 FINISH



SEAT: DESIGNTEX  
 RISE SKY  
 RESILIENCE FINISH

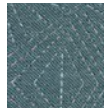


LAMINATE: PANOLAM  
 PIONITE  
 AIMTOO SAVATRE

### PILLOWS



ANZEA  
 MY WAY PICNIC 1079-07  
 SUNBRELLA FINISH



DESIGNTEX  
 STARBURST 3748-401DARK BLUE GREEN  
 ACRYLIC BACKING



DESIGNTEX  
 TESSELLATE PUMICE  
 ACRYLIC BACKING

## POPLAR

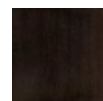
HP-331.11  
 900-332B-71-NA-GR-HI-P  
 900-332B-65-RCUR-GB-HI-P  
 900-332B-65-LCUR-GB-HI-P  
 900-332B-65-NA-GB-HI-P  
 900-332B-60-NA-GL-HI-P



BACK: VALLEY FORGE  
 BOLDREY IS42-31  
 STRATUS  
 WITH INCASE FINISH



SEAT: ANZEA  
 HEMINGWAY ANTELOPE



LAMINATE: PANOLAM  
 PIONITE  
 AIMTOO SAVATRE

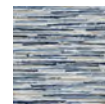
### PILLOWS



ARC COM  
 BURKINA SUNFLOWER  
 WITH STAIN RESISTANT FINISH



P. KAUFMANN  
 UV ROUGH DIAMOND DENIM  
 WITH NANOCLEAN FINISH



SWAVELLE  
 55" W I REPEAT  
 WITH ACRYLIC BACKING