

CHARTER

FURNITURE



HOLIDAY INN | H4 PUBLIC SPACE



HP-332.1.1

ADDITIONAL INFORMATION

DIMENSIONS

SHOWN AS
BEALE SCHEME

CHARTER ID
900-332-60-NA-GR-HI-B
900-332-60-NA-GB-HI-B
900-332-60-NA-GL-HI-B

3 Piece Banquette.
Upholstered tight seat with decorative top stitching.
Upholstered tight back with deep horizontal channel tufting.
Exposed laminate base with grommets at outside back for power cord management.
Adjustable glides.
Includes (3) 18" W x 18" H throw pillows and (6) Power modules with USB and power outlets.
Field verification by others.

Width 180"
Depth 26"
Height 32"
Seat Height 17"

Back COM Yardage 12
Seat COM Yardage 14
Pillow COM Yardage 3

CHARTER

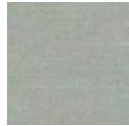
FURNITURE



HOLIDAY INN | H4 PUBLIC SPACE



BEALE
 HP-332.1.1
 900-332-60-NA-GR-HI-B
 900-332-60-NA-GB-HI-B
 900-332-60-NA-GL-HI-B



SEAT: DESIGNTEX
 RISE SKY
 WITH RESILIENCE
 FINISH



BACK: VALLEY
 FORGE
 SHARPLY IS42-26
 BOTANICA
 WITH INCASE
 STAIN FINISH

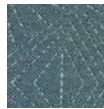


LAMINATE: PANOLAM
 PIONITE
 AIMTOO SAVATRE

HP-331/32.P- B1, B2, B3 PILLOWS



ANZEA
 MY WAY PICNIC 1079-07
 SUNBRELLA FINISH

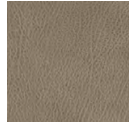


DESIGNTEX
 STARBURST 3748-401 DARK BLUE GREEN
 ACRYLIC BACKING

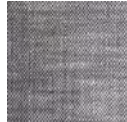


DESIGNTEX
 TESSELLATE PUMICE
 ACRYLIC BACKING

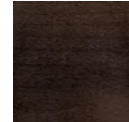
POPLAR
 HP-332.1.1
 900-332-60-NA-GR-HI-P
 900-332-60-NA-GB-HI-P
 900-332-60-NA-GL-HI-P



SEAT: ANZEA
 HEMINGWAY
 ANTELOPE



BACK: VALLEY FORGE
 BOLDREY IS42-31
 STRATUS
 WITH INCASE STAIN
 FINISH



LAMINATE: PANOLAM
 PIONITE
 AIMTOO SAVATRE

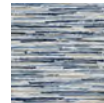
HP-331/32.P- P1, P2, P3 PILLOWS



ARCH COM
 BURKINA SUNFLOWER
 WITH STAIN RESISTANT FINISH



P. KAUFMANN
 UV ROUGH DIAMOND DENIM
 WITH NANOCLEAN FINISH



SWAVELLE
 CANAL LAKE
 WITH ACRYLIC BACKING