

CHARTER

FURNITURE

PUBLIC AREA



ADDITIONAL INFORMATION

DIMENSIONS

CHARTER ID
7510-DCA

Lounge chair.
Upholstered inside / outside tight back, arms and seat deck.
Featuring a loose seat cushion attached via D-rings and clips.
Featuring top stitching on all seams.
Exposed finished round tubular metal cradle and legs.
Nylon glides.

Width	31"
Depth	32"
Height	36"
Seat Height	18"
Seat Depth	20.25"
Arm Height	22"

COM Yardage	4.5
-------------	-----

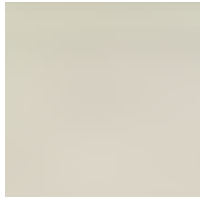
CHARTER

FURNITURE

PUBLIC AREA



PUBLIC AREA
LM-205
7510-DCA



FABRIC INNOVATIONS

NO DIRECTIONS
COLOR: FUEGO



METAL FINISH

POWDER COAT
PC-14