

CHARTER

FURNITURE

PUBLIC AREA



PA-101

ADDITIONAL INFORMATION

CHARTER ID
700-1739-DCA

Upholstered inside / outside tight bucket style seat with attached seat cushion.
Featuring decorative upholstered "collars" at top of paddle legs.
Exposed finished solid wood X-seat rail, and round legs.

DIMENSIONS

Width	25"
Depth	22"
Height	30"
Seat Height	19"
Seat Depth	18.5"

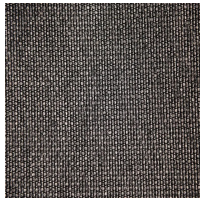
CHARTER

FURNITURE

PUBLIC AREA



DAYBREAK
(A) PA-101
700-1739-DCA



VALLEY FORGE
GURU'S TEXTURE
COLOR: BODHI



WOOD SPECIES: BEECH
SF-01191-HWS
WILSONART
COLOR: NEOWALNUT FINE VELVET

DUSK
(B) PA-101
700-1739-DCA



FABRIC INNOVATIONS
MOHAWK
COLOR: CARBON



WOOD SPECIES: BEECH
SF-01191-HWS
WILSONART
COLOR: NEOWALNUT FINE VELVET