

CHARTER

FURNITURE



HILTON GARDEN INN | MEETING ROOM



PA-125

ADDITIONAL INFORMATION

SHOWN AS
BLOOM SCHEME

CHARTER ID
500-3698-RAF-TBLT-HGI-BM

Lounge Chair with tablet.
Upholstered inside / outside tight back, arm and seat.
Featuring a rotating rectangular wood/laminate tablet.
Exposed finished metal round legs.

DIMENSIONS

Width	30"
Depth	30"
Height	31.5"
Seat Height	17.75"
Seat Depth	22"
Arm Height	24"

COM Yardage 4.25

CHARTER

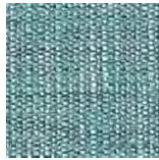
FURNITURE



HILTON GARDEN INN | MEETING ROOM



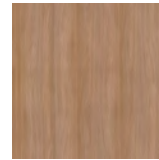
BLOOM SCHEME
PA-125
500-3698-RAF-TBLT-HGI-BM



RICHLoom
DIFRANCO
CARIBBEAN



METAL FINISH
MF-01162-HGI
TIGER DRYLAC
009/71190
MATTE BLACK



WOOD FINISH
SF-01146-HGI
WINSONART
UPTOWN
WALNUT