

# CHARTER

FURNITURE



HILTON GARDEN INN | MEETING ROOM



PA-120

## ADDITIONAL INFORMATION

SHOWN AS  
REVIVE SCHEME

CHARTER ID  
500-3698-RAF-HGI-RV

Lounge Chair.  
Upholstered inside / outside tight back, arm and tight seat.  
Exposed finished metal round legs.

## DIMENSIONS

Width	30"
Depth	30"
Height	31.5"
Seat Height	17.75"
Seat Depth	22"
Arm Height	24"

COM Yardage 4.50

# CHARTER

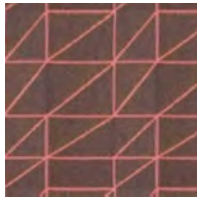
FURNITURE



HILTON GARDEN INN | MEETING ROOM



**REVIVE SCHEME**  
PA-120  
500-3698-RAF-HGI-RV



RICHLOOM  
JEOVANA  
PURPLE



METAL FINISH  
MF-01162-HGI  
TIGER DRYLAC  
009/71190  
MATTE BLACK