

CHARTER

FURNITURE



HILTON GARDEN INN | MEETING ROOM



PA-121

ADDITIONAL INFORMATION

SHOWN AS
REVIVE SCHEME

CHARTER ID
500-3698-LAF-HGI-RV

Lounge Chair.
Upholstered inside / outside tight back, arm and tight seat.
Exposed finished metal round legs.

DIMENSIONS

Width	30"
Depth	30"
Height	31.5"
Seat Height	17.75"
Seat Depth	22"
Arm Height	24"

COM Yardage 4.50

CHARTER

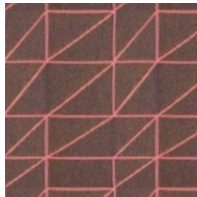
FURNITURE



HILTON GARDEN INN | MEETING ROOM



REVIVE SCHEME
PA-121
500-3698-LAF-HGI-RV



RICHLOOM
JEOVANA
PURPLE



METAL FINISH
MF-01162-HGI
TIGER DRYLAC
009/71190
MATTE BLACK