

CHARTER

FURNITURE

PUBLIC SPACE



107.2

CHARTER ID

ADDITIONAL INFORMATION

DIMENSIONS

1078-SC

Metal stack chair.
Upholstered inside / outside tight back and seat.
Steel square tubular frame with durable powder coated finish.

Width 19.75"
Depth 22.75"
Height 36.75"

Seat Height 18"

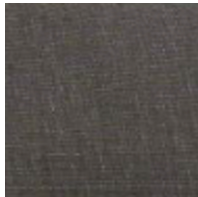
CHARTER

FURNITURE

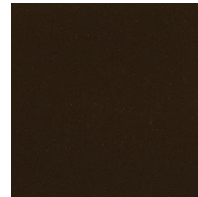
PUBLIC SPACE



GEN 4
107.2
1078-SC



VALLEY FORGE
CIS DANA TEXTURE
COLOR: 983-CMC



METAL FINISH
PC1417A
COLOR: BRONZE VARNISH
POWDERCOAT